

**ICOM**

COMMUNICATIONS RECEIVERS



SIMPLY THE BEST

Icom Inc.

Discover a world of information and intrigue



COMMUNICATIONS RECEIVER

IC-R8500

0.1-1999.99999MHz coverage*

Various modes for wide range

Various modes are supported for listening not only to amateur bands, FM or TV Broadcast stations, but also marine and avionics. The IC-R8500 covers a wide frequency range continuously from 0.1 to 1999.99999MHz* with 10Hz resolution. * Guaranteed 0.1-1000MHz and 1240-1300MHz only ; Some versions have restricted coverage.

Superior receive characteristics

The IC-R8500 has superior high receive sensitivity over its entire range and the built-in, high quality crystal (TCXO) provides good frequency stability of less than 100Hz below 30MHz; less than 3ppm above 30MHz. A variable tuning system, which is employed in the front-end tuning circuit, improves multi-signal characteristics, ensuring enhanced receiving performance.

Versatile scanning functions

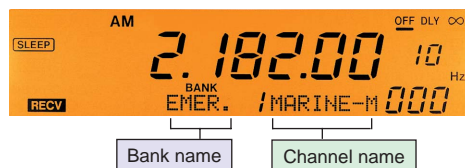
Basic scanning, memory, priority and program scans are available, and for more advanced needs, select scans can also be selected. The VSC (voice scan control) provides efficient scanning by skipping unmodulated signals.

IF shift and APF function

The IF shift function works efficiently to reject interference from nearby signals, especially in SSB mode. The APF adjusts the peak frequency of the received audio, particularly in CW mode.

Ample 1000 memory channels

The IC-R8500 has 800 memory channels divided into 20 banks (40 channels each), plus an auto memory write area of 100 channels and a skip area of the 100 channels. Alphanumeric names can be assigned to the channels (up to 8 characters) and banks (up to 5 characters) for easy recognition. Also, there are 20 scan edge memory channels to store 10 sets of frequencies for programmed scan plus 1 priority channel for priority scan.



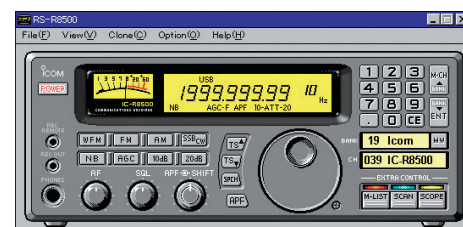
Other outstanding features

- REC and REC remote terminals for tape recorder control and for recording received signals
- SO-239 type and phono (RCA) antenna connectors for HF bands and type-N for VHF/UHF
- S-meter squelch
- Optional UT-102 Voice Synthesizer
- Sleep timer (30, 60, 90, 120 min. selectable)
- Optional TV-R7100 TV/FM ADAPTER to view TV broadcasts
- Noise blanker, RF attenuator, and selectable AGC
- AFC function tunes the receiving frequency to the center of FM or WFM signals
- RS-232C serial interface connector

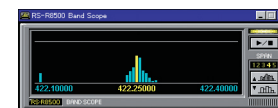
PC remote control

The optional RS-R8500 software allows you to control the IC-R8500 from your PC. All the receiver functions are available from the front panel screen. The memory channel list and program scan list makes it easier to edit the contents, and the bandscope screen provides a special function that the IC-R8500 does not have. When you find a busy frequency, clicking on the screen will tune to that frequency.

■ Front Panel Screen



■ Bandscope Screen



Rear view



HF/50MHz coverage and innovative features...



HF+50MHz COMMUNICATIONS RECEIVER



IC-R75

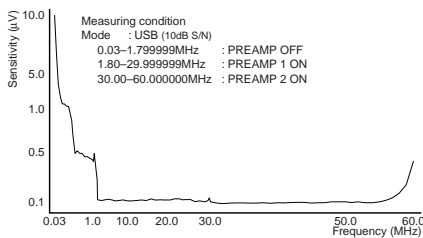
0.03-60MHz coverage*1

High sensitivity receiver circuit

Icom's wide band technology provides highly stable receiver sensitivity over the entire receive frequency range: 0.03-60MHz*1. The IC-R75 makes it easy to catch communications world wide.

*1 Guaranteed 0.1-29.99MHz and 50-54MHz only ; Some versions have restricted coverage.

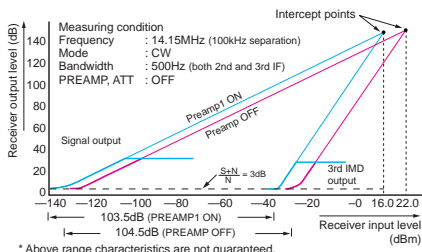
• Receive sensitivity characteristics example



Superior dynamic range

A wide dynamic range of over 100dB, and a well-designed triple conversion system help minimize image and spurious responses for better signal fidelity.

• Dynamic range characteristics example



Twin PBT capability

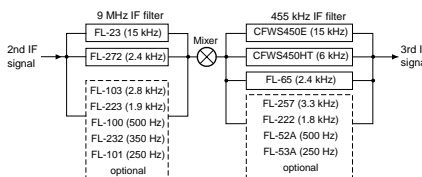
The twin PBT (Passband Tuning) function electronically narrows or moves the IF passband widths at two stages to get away from interference.

Flexible filter selection

Up to two optional filters*2 can be installed, providing flexible band width selection.

*2 One each for 9MHz and 455kHz IF stage.

• Filter Construction



DSP capability

With the optional UT-106 DSP unit installed,* you can add a noise reduction function which improves the S/N ratio. And the automatic NOTCH filter automatically cuts beat interference. These Digital functions pull out desired signals from noise, and provide superior receive quality. * Already installed with some versions.

Synchronous AM detection

The Synchronous AM detection function mixes a synchronized (same signal) reference signal with the carrier signal. This works to efficiently reduce distortion of the AM carrier signal for improved audio quality.

Simple operation

The function display has a large alphanumeric readout that indicates up to 8-character memory names for easy recognition. Often used keys such as mode switches, filter and Tuning Step have been placed above the Tuning Dial for easy access. The front mounted speaker provides clear and easy listening.

Other features

- Optional PC remote control RS-R75 is available
- Internal clock with ON/OFF, sleep timer
- 20dB attenuator and 2-level preamplifier
- 99 memories and 2 program scan edges with 8-digit memory name
- Selectable AGC (FAST/SLOW/OFF)
- Noise blanker for eliminating pulse type noise
- RTTY/CW reverse mode and CW pitch control
- Various scanning functions
- Adjustable LCD backlighting
- CI-V capability
- RS-232C serial interface connector

Rear view



PC control dual band receiver!



Tool bar

Multi-function receiver screen



Component screen



Simple screen

COMMUNICATIONS RECEIVER FOR COMPUTER

IC-PCR2500

0.01–3299MHz coverage*4

USB connection PC receiver

The IC-PCR2500 turns your PC into a wideband receiver, just plug into the USB port on your PC. All functions can be controlled on your desktop and the received signals can be heard through your computer's audio system via USB cable.

Dualwatch capability*1

The IC-PCR2500 covers 0.01–3299.999 MHz in AM, FM, WFM, SSB, CW, DV*2 and P25*3 modes on the main band, while the sub-band covers 50–1300MHz in AM, FM and WFM modes*4 simultaneously.

*1 Two antennas are required for dualwatch receive.
*2 Optional UT-118 required. *3 Optional UT-122 required. Already installed with some versions. *4 Frequency range differs depending on version.

Diversity receive capability

When two antennas are connected to the IC-PCR2500, it provides diversity reception*. The diversity reception compares the signal strength continuously and selects the better antenna for keeping good sound quality.

* Available in FM/DV/P25 mode between 50–1300MHz only. Cannot use the diversity receive function while using the dualwatch function.

3 interface screens to choose from

Choose the look you want with the user interface screens. "Multi-function receiver", "Component" and "Simple" screen are selectable.

Digital mode reception

The optional UT-118 D-STAR digital unit and UT-122* P25 digital unit can be installed to the IC-PCR2500. Catch the action in digital communications as well!

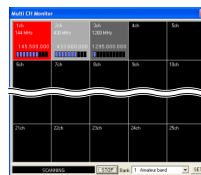
* Already installed with some versions.

DTMF remote control capability

Not only display the message, but also executing a PC program or beep sound is possible, when receiving a matched DTMF code. This function is standard on the main band, while the optional UT-108 DTMF decoder is required for the sub-band.

Multi channel monitor function

You can monitor up to 25 channels. The software tracks the channel activities with S-meter levels as each channel status is visually displayed by three background colors. Simply click the busy channel and the PCR2500 tunes to the active channel.



These great features too

- Bandscope and time-line scope
- Optional UT-106 DSP unit provides auto notch filter and noise reduction functions
- Voice recording function
- VSC (Voice squelch control) opens the squelch only when a modulated signal is detected
- S-meter squelch • Pocket beep function

- CTCSS/DTCS tones and duplex mode operation
- IF filter selection for changing IF filter width
- IF shift function (SSB, CW mode only)
- Noise blanker eliminates pulse type noise such as engine ignition. (SSB, CW, AM mode only)
- 20dB (approx.) RF attenuator (below 1300 MHz)
- Auto memory write scan stores detected frequency and mode into the PC memory.
- AFC function follows the receiving frequency when the frequency drifts in FM mode. (BW: 6kHz or 15kHz)
- AGC function; Fast/slow setting is possible
- Weather alert function (USA and Canada versions only)
- 24-digit DTMF tone decoder • Squelch delay
- Up to 2600 memory channels per file

- IC-PCR2500/R2500 PC requirements
- Microsoft® Windows® XP/2000/ME/98SE • USB 1.1 or 2.0
- Intel® Pentium® III 450MHz or faster (Pentium® 4 recommended)
- Hard disk with at least 50 MB of free disk space
- At least 128 MB of memory (256MB or more recommended)
- Display with 1024 × 768 pixel resolution, high color
- CD-ROM or DVD drive is required for software installation
- USB audio dropouts or gaps may occur because of a lack of PC power
- Additional hard disk space is required for recording sound or storing scope data



Supplied accessories (* Depending on version)
● AD-113A/E* ● USB cable ● Software CD ● Antenna

* This receiver consumes vehicle battery power in stand-by mode. We advise you to turn off the main unit power switch after use.

Dualwatch, wideband receiver



COMMUNICATIONS RECEIVER IC-R2500

0.01–3299MHz coverage*4

Dualwatch capability

The IC-R2500 has a dualwatch receive capability*1, allowing you to receive two bands simultaneously. It covers 0.01–3299.999 MHz in AM, FM, WFM, SSB, CW, DV*2 and P25*3 modes on main band, while the sub-band covers 50–1300MHz in AM, FM and WFM modes.

*1 Two antennas are required for dualwatch receive.
*2 Optional UT-118 required. *3 Optional UT-122 required. Already installed with some versions. *4 Frequency range differs depending on version.

Diversity receive capability

The diversity receive* mode is useful for mobile operation where the receive condition changes continuously. It compares the signal strength and chooses the better antenna signal dynamically for maintaining good sound quality.

* Two antennas are required. Available in FM/DV/P25 mode between 50–1300MHz only. Cannot use the diversity receive function while using the dualwatch function.

Wide LCD display for independent band control

The wide LCD display shows both main/sub band settings in an easy to read symmetric side by side layout. The controller provides separate tuning, volume, squelch knobs and function buttons for the left (Main) and right (Sub) side bands. Also, The LCD backlit color is selectable from amber and green. Select a suitable color for your lighting condition or your preference.

1000 alphanumeric memory channels

1000 on-board memory channels at the touch of a button! With Icom's Dynamic Memory Scan, DMS, you have a versatile memory channel management system at your command. The 1000 memory channels can be arranged by service or personal preference in the 21 memory banks. Selectively link the channels together to scan depending on your needs. Programming the memory channels and 6 character memory names is simple with your PC.

60 channels per second scan

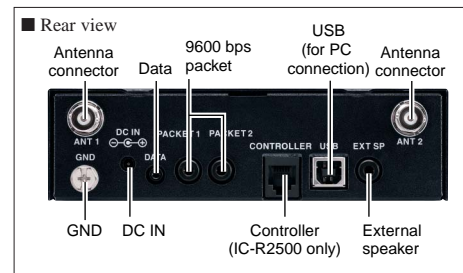
Quickly scan through a band with the IC-R2500's 60 Ch/second scan rate*. Program, priority scan and various scanning modes are available.

* When tuning step is less than 100kHz in program scan mode.

Other features

- Optional DSP capability with UT-106
- CTCSS/DTCS tones and duplex mode operation for monitoring a repeater
- VSC (Voice squelch control) opens the squelch only when a modulated signal is detected
- IF filter selection for changing IF filter width
- IF shift function (SSB, CW mode only)
- Noise blanker eliminates pulse type noise such as engine ignition noise (SSB, CW, AM mode only)
- Weather alert function (USA and Canada versions only)
- AFC function follows the frequency drifts in FM mode (BW: 6kHz or 15kHz)

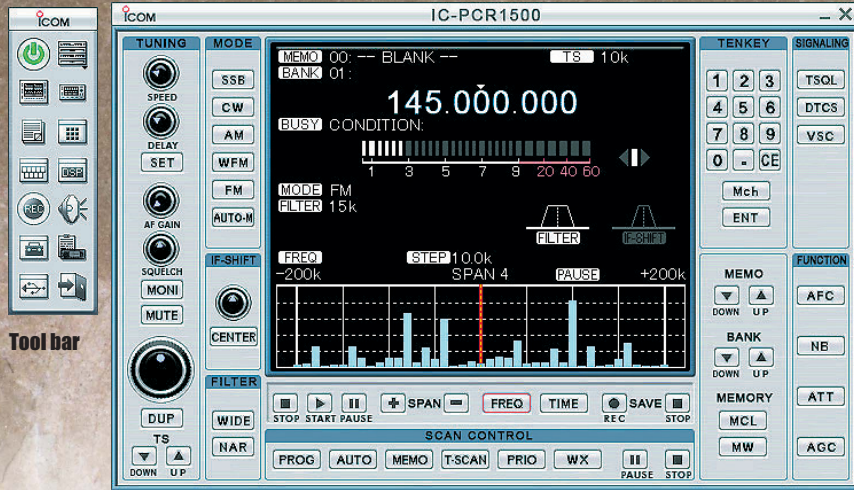
- 20dB (approx.) RF attenuator (below 1300MHz)
- 30 min – 2 hour auto power off timer
- Fast/slow AGC setting • Short/long squelch delay
- All IC-PCR2500 functions are available when connected to a PC (See the IC-PCR2500 page for required PC capability)
- Cloning function allows you to read/write memory contents from your PC. Sharing the data with IC-PCR2500 is also possible.



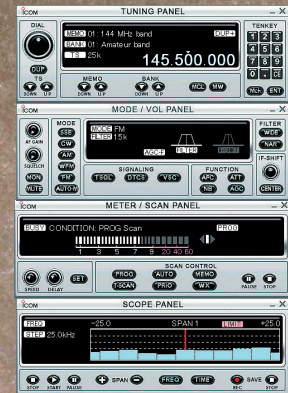
- Supplied accessories**
- AD-113A/E* • Controller cable, 3.5m; 11.5ft • Antenna
 - USB cable • Software CD • Controller head

* This receiver consumes vehicle battery power in stand-by mode. We advise you to turn off the main unit power switch after use.

PC control wideband receiver!



Multi-function receiver screen



Component screen



Simple screen

COMMUNICATIONS RECEIVER FOR COMPUTER

IC-PCR1500

0.01-3299MHz coverage*1

Ultra wideband coverage

The IC-PCR1500 is a PC control receiver with all functions controllable from your PC. Explore radio signals from all over the world from 0.01 to 3299.999MHz*1. 1Hz fine tuning resolution is available in all bands.

*1 Frequency range differs depending on version.

USB cable connection

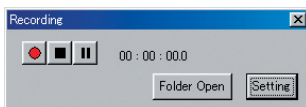
The USB port provides a faster data link to the IC-PCR1500 which allows you to expand the receiver's capabilities with quicker response times as well as new audio processing functions, as you are able to hear the received signals through your computer's audio system.

3 interface screens to choose from

Choose the look you want with the user interface screens. "Multi-function receiver", "Component" and "Simple" screens are selectable.

Recording function

You can record audio in WAV format directly through the USB port. Skip the hours of channel inactivity with the software's remote control function which pauses and resumes recording according to the channel activity. You can also adjust the sampling rate.



Multi channel monitor function

Monitor up to 25 channels as the software tracks the channel activities with S-meter levels of each channel. The status is visually displayed by three background colors. Simply click the busy channel and the PCR1500 tunes to the active channel.

Bandscope and time-line scope

As well as a 5MHz (Max.) wide range bandscope*2, the new time-line scope allows you to observe the band condition within a specified time period (3 to 100 minutes). In addition, the sweep data can be stored on your PC for future use.

*2 AF output is not emitted when setting the bandscope range between 500kHz and 5MHz or setting in CW or SSB mode.

These great features too

- Optional AF DSP capability with UT-106
- Max. 60 Ch/sec. high speed scan
 - * Depending on PC's capability. When tuning step is less than 100kHz in program scan mode.
- VSC (Voice squelch control) opens the squelch only when a modulated signal is detected
- CTCSS/DTCS tones and duplex mode operation for monitoring a repeater
- S-meter squelch • Pocket beep function
- IF filter selection for changing IF filter width
- IF shift function (SSB, CW mode only)
- Noise blanker eliminates pulse type noise such as engine ignition. (SSB, CW, AM mode only)
- 20dB (approx.) RF attenuator (below 1300 MHz)

- Auto memory write scan stores detected frequency and mode into the PC memory.
- AFC function (Auto Frequency Control) follows the receiving frequency when the receiving frequency drifts in FM mode. (BW: 6kHz or 15kHz)
- AGC function; Fast/slow setting is possible
- Weather alert function (USA and Canada versions only)
- 24-digit DTMF tone decoder • Squelch delay
- Up to 2600 memory channels per file

- IC-PCR1500/R1500 PC requirements
 - Microsoft® Windows® XP/2000/ME/98SE • USB 1.1 or 2.0
 - Intel® Pentium® III 450MHz or faster (Pentium® 4 recommended)
 - Hard disk with at least 50 MB of free disk space
 - At least 128 MB of memory (256MB or more recommended)
 - Display with 1024 × 768 pixel resolution, high color
 - CD-ROM or DVD drive is required for software installation
 - USB audio dropouts or gaps may occur because of a lack of PC power
 - Additional hard disk space is required for recording sound or storing scope data



- Supplied accessories (* Depending on version)
- AD-113A/E*
 - USB cable
 - Software CD
 - Antenna

* This receiver consumes vehicle battery power in stand-by mode. We advise you to turn off the main unit power switch after use.

Wideband mobile receiver with remote control head



COMMUNICATIONS RECEIVER

IC-R1500

0.01–3299MHz coverage*1

Ultra wideband coverage

The IC-R1500 covers 0.01–3299.999MHz*1 in AM, FM, SSB and CW mode.

*1 Frequency range differs depending on version.

Remote control head

While similar to the PCR1500, the IC-R1500 is supplied with a remote control head and 3.4m (11.2ft) separation cable for mobile and/or base station operation. It provides a variety of mounting possibilities in various place. In addition, Green, amber and yellow backlit colors are selectable.



Optional DSP capability

Whether you are into weak signal work or you have noise from your vehicle ignition, the optional DSP unit, UT-106, will help. The noise reduction and auto notch filter functions are the key to pulling a radio signal out of the noise.

CTCSS, DTCS tone squelch

The CTCSS and DTCS tones provide quiet standby while waiting for a matched tone signal. And the pocket beep function alerts you with a beep sound when a matched tone signal is received.

1000 alphanumeric memory channels

1000 on-board memory channels at the touch of a button! With Icom's Dynamic Memory Scan, DMS, you have a versatile memory channel management system at your command. The 1000 memory channels can be arranged by service or personal preference in the 21 memory banks. Selectively link the channels together to scan depending on your needs. Programming the memory channels and 6 character memory names is simple with your PC.

60 channels per second scan

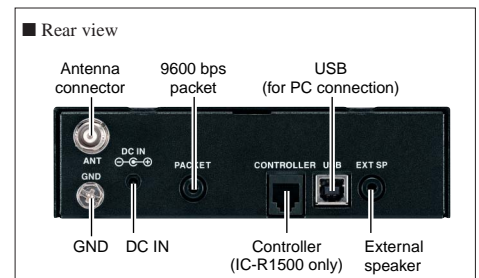
Quickly scan through a band with the IC-R1500's 60 Ch/second scan rate*2. Program, priority scan and various scanning modes are available.

*2 When tuning step is less than 100kHz in program scan mode.

Other features

- VSC (Voice squelch control) opens the squelch only when a modulated signal is detected
- IF filter selection for changing IF filter width
- IF shift function (SSB, CW mode only)
- Noise blanker eliminates pulse type noise such as engine ignition noise (SSB, CW, AM mode only)
- 20dB (approx.) RF attenuator (below 1300MHz)
- Weather alert function (USA and Canada versions only)
- AFC function follows the receiving frequency when the receiving frequency drifts in FM mode (BW: 6kHz or 15kHz)
- 30 min – 2 hour auto power off timer

- Fast/slow AGC setting
- Short/long squelch delay
- All IC-PCR1500 functions are available when connected to a PC (See the IC-PCR1500 page for required PC capability)
- Cloning function allows you to read/write memory contents from your PC. Sharing the data with IC-PCR1500 is also possible.



Supplied accessories

- AD-113A/E*
- Controller cable, 3.4m; 11.2ft
- Antenna
- USB cable
- Software CD
- Controller head

* This receiver consumes vehicle battery power in stand-by mode. We advise you to turn off the main unit power switch after use.

Scan, Monitor, Record The Pro's Scanner!

COMMUNICATIONS RECEIVER

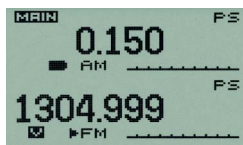
IC-R20

0.150-3304.999MHz coverage*1

Rugged
MIL-STD 810

2 for 1, Dualwatch receive

Until the IC-R20, the capability of monitoring two frequencies required two radios. Whether you need to monitor local public safety, air traffic control, or at the track listening to two drivers, even the play by play from both the local TV and radio station is possible!

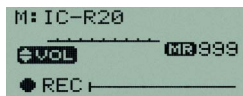


Shortwave to microwave, Wideband coverage

The IC-R20 covers 150kHz to 3304.999MHz*1 in SSB, CW, AM, FM and WFM modes. When receiving in dualwatch, the combination of channels is limited to 150kHz to 469.999MHz (VFO A) and 118MHz to 174.999MHz or 330MHz to 1304.999MHz in AM, FM, WFM modes (VFO B). (*1 Depending on version, U.S.A. version is cellular blocked.)

4-hour digital recorder

The IC-R20 has an internal 32MB digital recorder capable of storing received communications. This feature is useful in a variety of ways, like recording wireless microphone audio at a meeting. There is also a USB port to download to a computer for storage or to forward to a friend. (PC playback not possible)



Alphanumeric memory channel

With 1,000 regular memory channels, 200 automatic memory scan channels and 25 pairs of frequency scan edges, the IC-R20 makes it easy to identify received signals with the capability of programming a name to each channel.

CTCSS, DTCS tone signaling

When multiple users share the same channel, these users use specialized signaling to reduce interference from other users. The two popular signaling formats, CTCSS and DTCS are standard in the IC-R20.

11 hours of continuous receive*2

Icom's energy efficient design allows the IC-R20 11*2 hours of continuous reception from the internal Li-Ion battery pack. Also, the IC-R20 can operate with 3 AA Alkaline cells for longer operation. Charging of the internal battery pack is possible from either an optional cigarette lighter cable or the supplied AC adapter. (*2 Single receive in FM mode at Max. AF audio.)

See your signals

Sometimes hearing a signal is not enough, so the IC-R20 includes a band scope. The bandscope enables you to see signals around a monitored frequency. An additional function of the bandscope is the ability to hear the signal while sweeping a range, so you can see if the signal is modulated.



Scan features

The IC-R20 is Icom's fastest receiver with 100*3 channels per second scanning speed. You can tag memory channels into dynamic banks, ranging from Max. 100 channels per bank (Max. 26 banks) as well as link multiple banks for customized memory bank scanning. Additionally, the IC-R20 offers multiple scanning controls such as scan delay, scan resume for received signal notification. (*3 In VFO mode.)

Other superior features...

- VSC (Voice Squelch Control) opens the squelch only when a modulated signal is detected.
- Offset monitor capability
- Auto squelch and squelch monitor capability
- Built-in attenuator and RF gain control
- Noise blanker, ANL (Auto Noise Limiter), AF filter
- AFC (Auto Frequency Control) function
- PC remote control capability with optional CT-17
- Built-in ferrite bar antenna for AM broadcast
- FM earphone cord antenna capability
- Dial speed-up function
- Auto power off and power save functions
- Reversible rotary selector and up/down buttons
- Weather channel* (* U.S.A. version only)
- Preprogrammed TV and shortwave channels



2-inch TFT color LCD built-in! See your information on-screen!

COMMUNICATIONS RECEIVER

IC-R3

0.495-2450.095MHz coverage*

Rugged
MIL-STD 810



TV picture receive capability

The IC-R3 can display AM-TV (one of either NTSC or PAL B/G system depending on version) and Amateur TV on its 2-inch color TFT. You can enjoy TV programs at anytime, anywhere. Also the IC-R3 has A/V output, so you can transfer images to a TV monitor or video recorder. You can use the IC-R3 to monitor indoors or outdoors where security is an issue.



Super-wide frequency coverage

Icom's wide band technology allows the super wide coverage of 0.495 to 2450MHz*.

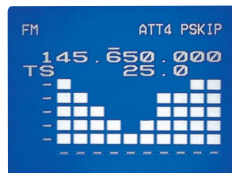
* Some versions have restricted coverage.

Dual LCD

The color LCD has various display settings, such as simple screen, multi-function screen, band-scope and so on. 8 Background colors are selectable at your preference. The color LCD can be turned off and the sub LCD shows frequency settings for saving battery consumption, when a TV picture is not received.

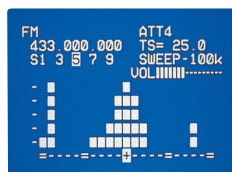
Signal strength level indicator

This function measures signal strength levels every 0.3 sec. continuously for 3 sec. When used with a directional antenna, this function helps search for signal origin, such as fox-hunting, concealed mic. and so on.



Band scope function

Spectral activity can be seen on the TFT color display. The simple band scope becomes a useful tool for finding new or interfering signals. The 5 selectable bandwidths, adjustable to 500kHz, will give a quick snapshot of activity.



Lithium-Ion battery standard

The BP-206, Lithium-Ion battery comes as standard for longer battery life. The attached BP-206 can be charged simultaneously while being used with the supplied AC adapter, BC-153A/D* or the optional cigarette lighter cable, CP-18A/E.

* Not supplied for some versions.

	TV reception color LCD	Rated AF output backlight OFF	Power save
BP-206	1 hr. 45 min.	2 hrs. 10min.	25hrs. 30min.
Alkaline batteries	45min.	57min.	27hrs. 30min.
Ni-Cd batteries	50min.	60min.	12hrs. 50min.

Excellent memory capability

450 memory channels are available that store operating frequency, mode and tuning step, etc. Up to 6 character memory names can be assigned for each memory channel, allowing quick and easy channel selection. The memory channels are divided into 9 banks, 8 banks of 50 (for individual frequencies) and 1 bank of 50 (for frequency ranges) for simple memory management. In addition, 10 memory channels are available for storing AM-TV frequencies.

Multi function 'joy-stick' switch

A 4-way action 'joy-stick' switch gives you quick and easy access to many settings, including band selection, AF volume, LCD settings and more.



These excellent features

- Tone squelch functions with pocket beep
- One-touch, semi-duplex frequency monitoring capability
- Automatic squelch
- Various scan types such as program, band, bank, frequency skip and more
- Priority watch function
- 4-step RF attenuator reduces extremely strong interference
- One-touch, offset monitoring capability

A 'world' of listening that fits in your palm!

COMMUNICATIONS RECEIVER

IC-R5

0.150-1309.995MHz coverage*1

Rugged
MIL-STD 810

Listen almost anywhere to almost anything

The IC-R5's combination of small size, powerful specifications and outstanding features put you in the action, whether listening in on your favorite driver's car-to-pit radio calls while at the race track, looking for something new while traveling, or catching your favorite radio programs at home.

Wideband receiver with band switch function

0.150-1309.995MHz*1 wide frequency coverage means virtually anything from AM broadcast to UHF TV audio is fair listening game. Every TV broadcast channel is preprogrammed into this radio.*2 Listen to AM & FM radio stations, utility communications, and more. The band switch allows you quick access to the operating band. The last used frequency is recalled when the operating band is changed – its like having 12 VFOs*1 available. This system provides for simple operation!

*1 Some versions have restricted coverage.

*2 Depending on version.

1250 Alphanumeric memory channels

Make up your own channel names for each of up to 1250 memory channels, making channel recognition easy! The IC-R5's LCD display lets you use numbers, letters or a combination of both when naming channels and banks. Icom's exclusive Dynamic Memory Scan (DMS) gives you the flexibility to customize and manage the IC-R5's memory banks the way you want or need.

Convenient power and charging

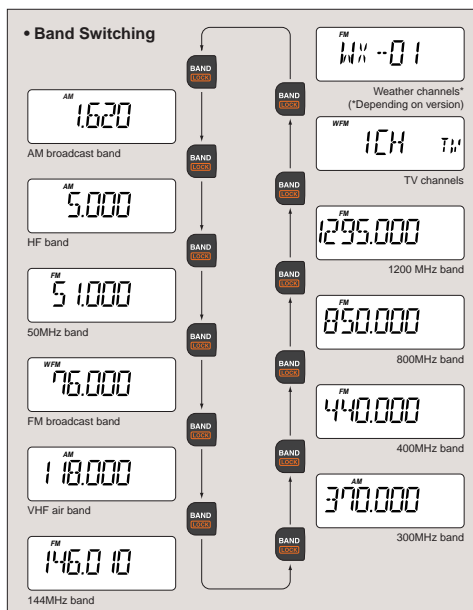
Power on the go is easy, thanks to the IC-R5's ability to operate from a variety of power sources. You may: power the radio via the DC port; or use two "AA" size rechargeable Ni-Cd batteries; or use long storage life "AA" alkalines. A DC jack allows for simultaneous battery charging while operating the radio.

Computer programmable








With the optional software and cable, IC-R5 programming and cloning are a breeze. Hook your IC-R5 up to a PC and you're ready to customize channel names, scan lists, and more.



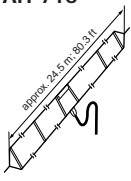





More outstanding features...






- Built-in ferrite bar antenna for AM broadcast
- FM earphone cord antenna capability
- DTCS and CTCSS tone squelch function
- Offset monitor capability for semi-duplex operation monitoring
- Auto squelch and squelch monitor capability
- Built-in attenuator
- Low-battery indicator and beep
- 30-120 minutes auto power off timer
- LCD backlight with timer
- Auto memory write scan stores the detected frequency, mode and tone into a specified memory
- Priority watch function with beep alert
- Optional antenna connector adapter available (SMA to BNC)
- 100 preprogrammed worldwide shortwave channels*
- Weather channels with weather alert function* (* U.S.A. version only)







OPTIONS FOR BASE RECEIVERS

MODEL NAME	AC ADAPTER	EXTERNAL SPEAKERS			DC POWER CABLE	MOBILE BRACKETS		CARRYING HANDLE
	AD-55/A/V	SP-20	SP-21	SP-23	OPC-023	IC-MB5	MB-12	MB-23
								
IC-R8500	✓	✓	✓	✓	✓		✓	✓
IC-R75	✓	✓	✓	✓		✓		✓

MODEL NAME	REMOTE CONTROL SOFTWARE	EXTERNAL ANTENNAS		CI-V CONVERTER	HIGH STABILITY CRYSTAL UNITS		VOICE SYNTHESIZER	DSP UNIT	
	RS-R75	RS-R8500	AH-7000	AH-710	CT-17	CR-282 ±0.5ppm	CR-293 ±0.5ppm	UT-102	UT-106
									
IC-R8500		✓	✓ (VHF/UHF bands only)	✓ (HF band only)	✓		✓	✓	
IC-R75	✓			✓ (HF band only)	✓	✓	✓	✓	

MODEL NAME	9MHz FILTERS								
	FL-100 CW/RTTY narrow; 500Hz/-6dB	FL-101 CW narrow; 250Hz/-6dB	FL-103 SSB wide; 2.8kHz/-6dB	FL-223 SSB narrow; 1.9kHz/-6dB	FL-232 CW/RTTY narrow; 350Hz/-6dB				
									
IC-R8500									
IC-R75	✓ (One of these 9MHz filters)	✓ (One of these 9MHz filters)	✓ (One of these 9MHz filters)	✓ (One of these 9MHz filters)	✓ (One of these 9MHz filters)				

MODEL NAME	455kHz FILTERS								
	FL-52A CW/RTTY narrow; 500Hz/-6dB	FL-53A CW narrow; 250Hz/-6dB	FL-222 SSB narrow; 1.8kHz/-6dB	FL-257 SSB wide; 3.3kHz/-6dB					
									
IC-R8500	✓								
IC-R75	✓ (One of these 455kHz filters)	✓ (One of these 455kHz filters)	✓ (One of these 455kHz filters)	✓ (One of these 455kHz filters)					

* Some options may not be available in some countries. Please ask your dealer for details.

: Applicable : Not applicable

OPTIONS FOR MOBILE AND PC RECEIVERS

	AC ADAPTER	EXTERNAL SPEAKER	CIGARETTE LIGHTER CABLE	DC POWER CABLE	CONTROLLER BRACKET		MOUNTING BASE	EXTENSION CABLE	DSP UNIT
MODEL NAME	AD-113A/E	SP-10	CP-12L	OPC-254L	MB-58	MB-84	MB-65	OPC-1156 3.5m;11.5ft	UT-106
IC-PCR2500	✓	✓	✓	✓					✓
IC-R2500	✓	✓	✓	✓		✓	✓ (Use with MB-84)	✓	✓
IC-PCR1500	✓	✓	✓	✓					✓
IC-R1500	✓	✓	✓	✓	✓		✓ (Use with MB-58)	✓	✓

	DTMF DECODER UNIT	D-STAR DIGITAL UNIT	P25 DIGITAL UNIT						
MODEL NAME	UT-108	UT-118	UT-122						
IC-PCR2500	✓ (One of these units)	✓ (One of these units)	✓						
IC-R2500	✓ (One of these units)	✓ (One of these units)	✓						
IC-PCR1500									
IC-R1500									

* Some options may not be available in some countries. Please ask your dealer for details.

: Applicable : Not applicable

Internet Frequency Database

For U.S.A. customers

Check out www.icomreceivers.com for frequency lists in your neighborhood. (Based on FCC license.) You can download the file to your own computer and then, with the ICOM programming software, will be able to clone the data to an ICOM receiver!

<http://www.icomreceivers.com>

ICOM Welcome to Icom Receivers!

Main icomreceivers.com

PerCon Corp. [Internet Frequency Database.](#)

Our Receivers

Links

F A Q

Download

Icom America







Icom America, Inc. and PerCon Corporation announce a new website for your scanning enjoyment! icomreceivers.com is the site you want to go to download the memory channels for your ICOM computer programmable receiver. The IC-PCR100, IC-PCR1000, IC-R2, IC-R3, IC-R10, IC-R8500, and IC-R75 are supported on the site. Future ICOM radios will be added as well.







Traveling in the US, just specify the database parameters of one or more of the following: zip code, city, county, state, radio service, frequency range, company, and many other combinations for the frequency information you want. The site will process specific requests and create an ICOM ICF file in a correct format for a chosen receiver. The user can download the file to his or her own computer and then, with the ICOM programming software, will be able to clone the data to an ICOM receiver. Online database has a huge number of frequencies sorted by many different parameters, most importantly by geographic location, frequency range and type of radio service.





Next time you are on the road don't waste time scanning for activity. Travel prepared with channels preprogrammed in your ICOM receiver! Visit PerCon's [Frequency Database](#) today!

Main | PerCon Corp. | Receivers | Links | FAQ | Download | Icom America

OPTIONS FOR HANDHELD RECEIVERS

MODEL NAME	BATTERY ASSEMBLY	CHARGERS					CIGARETTE LIGHTER CABLE	
	BP-206 3.7V/1650mAh (Li-Ion) 	BC-135 DESKTOP CHARGER 	BC-149A/D WALL CHARGER 6V DC, 1A output 	BC-153A/D WALL CHARGER 6V DC, 1A output 	BC-156 DESKTOP CHARGER 		CP-18A/E 	
IC-R20	✓		✓		✓		✓	
IC-R3	✓	✓		✓			✓	
IC-R5			✓				✓	

MODEL NAME	CARRYING CASES			CLONING CABLES			CLONING SOFTWARE		
	LC-146A 	LC-151 	LC-158 	OPC-474 Receiver-to-receiver 	OPC-478 Receiver to PC RS-232C cable	OPC-478U Receiver to PC USB cable 	CS-R3	CS-R5	CS-R20 With USB cable 
IC-R20			✓						✓
IC-R3		✓		✓	✓		✓		
IC-R5	✓			✓	✓	✓		✓	

MODEL NAME	ANTENNA ADAPTER	EARPHONE	HEADPHONE	CI-V CONVERTER				
	AD-92SMA BNC to SMA 	SP-13 	HP-4 	CT-17 				
IC-R20		✓		✓				
IC-R3		✓	✓					
IC-R5	✓	✓	✓					

* Some options may not be available in some countries. Please ask your dealer for details.

: Applicable

: Not applicable

SPECIFICATIONS

	IC-R8500	IC-R75	IC-PCR2500	IC-R2500	
General	Frequency coverage (May differ according to version)	0.1–823.99999MHz* 849.00001–868.99999MHz 894.00001–1999.99999MHz* *Guaranteed range 0.1–1000MHz and 1240–1300MHz	0.03–60MHz* *Guaranteed range 0.1–29.99MHz and 50–54MHz	0.010–3299.999MHz* (Main band) 50–1300MHz (Sub band) * Guaranteed range 0.495–3000MHz. Some bands blocked in the USA version.	0.010–3299.999MHz* (Main band) 50–1300MHz (Sub band) * Guaranteed range 0.495–3000MHz. Some bands blocked in the USA version.
	Modes	USB, LSB, AM, AM-N, AM-W, CW, CW-N*, FM, FM-N, WFM *Optional CW narrow filter required	USB, LSB, CW, RTTY, AM, S-AM, FM	AM, FM, WFM, USB*, LSB*, CW*, DV*, P25* ³	AM, FM, WFM, USB*, LSB*, CW*, DV*, P25* ³
	Frequency stability	±100Hz (below 30MHz) ±3ppm (above 30MHz)	±7ppm (1 min. to 1 hr. after power ON; +25°C)	±3ppm (0°C to +60°C)	±3ppm (–10°C to +60°C)
	Current drain	2.0A at 13.8V DC	1.1A at 13.8V DC	1.5A (Dualwatch mode)	1.5A (Dualwatch mode)
	Power supply requirement	13.8V DC ±15% or 117, 220, 240V AC with AD-55	13.8V DC ±15% or 117, 220, 240V AC with AD-55	12.0V DC ±15%	12.0V DC ±15%
	Antenna connector	SO-239 (50Ω) and Phono (RCA: 500Ω) for below 30MHz and Type-N (50Ω) for above 30MHz	SO-239 (50Ω), 500Ω terminals	BNC×2 (50Ω)	BNC×2 (50Ω)
	Number of memory channels	1021 (including 20 scan edges, 1priority)	101 (including 2 scan edges)	Unlimited (2600 Ch/file)	1000
	Dimensions (W×H×D) projections are not included	287×112×309mm ; 11 ¹ / ₁₆ ×4 ¹ / ₃₂ ×12 ⁵ / ₃₂ in	241×94×229mm; 9 ¹ / ₂ ×3 ¹ / ₁₆ ×9 ¹ / ₃₂ in	146×41×206mm; 5 ⁷ / ₄ ×1 ⁵ / ₈ ×8 ¹ / ₈ in	Main unit: 146×41×206 mm; 5 ⁷ / ₄ ×1 ⁵ / ₈ ×8 ¹ / ₈ in Controller: 140×50×27.5 mm; 5 ¹ / ₂ ×1 ³ / ₃₂ ×1 ³ / ₃₂ in
	Weight (approx.)	7kg; 15.4lb	3.0kg; 6.6lb	1.35kg; 3lb	Main unit: 1.35kg; 3lb Controller: 250g; 8.8oz
Receiver	Sensitivity SSB, CW, RTTY, AM: at 10dB S/N FM, WFM: at 12dB SINAD	SSB, CW: 0.1–0.5MHz 1.0μV 0.5–1.8MHz 2.0μV 1.8–2.0MHz 0.25μV 2.0–30MHz 0.2μV 30–1000MHz 0.32μV 1240–1300MHz 0.32μV AM: 0.1–0.5MHz 6.3μV 0.5–1.8MHz 13μV 1.8–2.0MHz 3.2μV 2.0–1000MHz 2.5μV 1240–1300MHz 2.5μV AM-N: 1.8–2.0MHz 2.5μV 2.0–1000MHz 2.0μV 1240–1300MHz 2.0μV AM-W: 30–1000MHz 3.2μV 1240–1300MHz 3.2μV FM: 28–1000MHz 0.5μV 1240–1300MHz 0.5μV WFM: 30–1000MHz 1.4μV 1240–1300MHz 2.0μV	SSB, CW, RTTY: 0.1–1.8MHz* ⁵ 2.0μV 1.8–29.99MHz* ⁶ 0.16μV 50–54MHz* ⁷ 0.13μV AM, S-AM: 0.1–1.8MHz* ⁵ 5.6μV 1.8–29.99MHz* ⁶ 1.6μV 50–54MHz* ⁷ 1.0μV FM: 28–29.99MHz* ⁶ 0.22μV 50–54MHz* ⁷ 0.2μV	SSB, CW: 0.495–1.799MHz 5.0μV 1.8–49.999MHz 0.5μV 50–699.999MHz 0.4μV 700–1300MHz 0.5μV AM: 0.495–1.799MHz 25μV 1.8–49.999MHz 2.5μV 50–699.999MHz 2.0μV 700–1300MHz 2.5μV FM: 28–49.999MHz 0.63μV 50–699.999MHz 0.5μV 700–1300.000MHz 0.63μV 1300* ⁴ –2299.999MHz 5.6μV 2300–3000.000MHz 18μV WFM: 50–699.999MHz 1.4μV 700–1300.000MHz 1.8μV 1300* ⁴ –2299.999MHz 18μV 2300–3000.000MHz 56μV	SSB, CW: 0.495–1.799MHz 5.0μV 1.8–49.999MHz 0.5μV 50–699.999MHz 0.4μV 700–1300MHz 0.5μV AM: 0.495–1.799MHz 25μV 1.8–49.999MHz 2.5μV 50–699.999MHz 2.0μV 700–1300MHz 2.5μV FM: 28–49.999MHz 0.63μV 50–699.999MHz 0.5μV 700–1300.000MHz 0.63μV 1300* ⁴ –2299.999MHz 5.6μV 2300–3000.000MHz 18μV WFM: 50–699.999MHz 1.4μV 700–1300.000MHz 1.8μV 1300* ⁴ –2299.999MHz 18μV 2300–3000.000MHz 56μV
	Selectivity	SSB, CW, AM-N: 2.2kHz/–6dB AM, FM-N: 5.5kHz/–6dB AM-W, FM: 12kHz/–6dB WFM: 150kHz/–6dB	SSB, CW, RTTY: 2.1kHz/–6dB 4kHz/–6dB 6kHz/–6dB AM, S-AM: 20kHz/–50dB 12kHz/–6dB FM: 30kHz/–50dB	SSB, CW, AM: 2.8kHz/–6dB AM, FM, SSB, CW: 6.0kHz/–6dB AM, FM: 15kHz/–6dB AM, FM, WFM: 50kHz/–6dB WFM: 230kHz/–6dB (typical)	SSB, CW, AM: 2.8kHz/–6dB AM, FM, SSB, CW: 6.0kHz/–6dB AM, FM: 15kHz/–6dB AM, FM, WFM: 50kHz/–6dB WFM: 230kHz/–6dB (typical)
	Spurious and image rejection (except IF)	60dB (1.8–30MHz) 50dB typical (above 30MHz)	70dB (Except IF through/ 50MHz band)	Not specified	Not specified
	AF power (at 10% distortion)	2W with an 8Ω load	2W with an 8Ω load	500mW with an 8Ω load	500mW with an 8Ω load
	Ext. speaker connector	2-conductor 3.5 (d) mm (1/8")/4–8Ω	2-conductor 3.5 (d) mm (1/8")/8Ω	2-conductor 3.5 (d) mm (1/8")/8Ω	2-conductor 3.5 (d) mm (1/8")/8Ω

*1 0.01–1300MHz only. *2 Optional UT-118 required. *3 Optional UT-122 required. *4 1300.000001MHz. *5 Preamp OFF *6 Preamp1 ON *7 Preamp2 ON



Applicable U.S. Military Specifications

Icom makes rugged products that have been tested to and passed the MIL-STD requirements and strict environmental standards for shock (MIL-810C, D, E or F) and vibration (MIL-810C, D, E or F). Look for this logo to determine which models meet these requirements.

SPECIFICATIONS

	IC-PCR1500	IC-R1500	IC-R20	IC-R3	IC-R5	
General	Frequency coverage (May differ according to version)	0.010–3299.999MHz* * Guaranteed range 0.495–3000MHz. Some bands blocked in the USA version.	0.010–3299.999MHz* * Guaranteed range 0.495–3000MHz. Some bands blocked in the USA version.	0.150–1304.999MHz 1305.000–3304.999MHz* * Some bands blocked in the USA version. Dual watch VFO A: 0.150–469.999MHz VFO B: 118–174.999, 330–1304.999MHz	U.S.A. version: 0.495–815.995MHz 902.000–2450.095MHz Europe version: 0.495–2450.095MHz	U.S.A. version: 0.150–1309.995MHz* * Cellular blocked Europe version: 0.150–1309.995MHz
	Modes	AM, FM, WFM, USB* ⁴ , LSB* ⁴ , CW* ⁴	AM, FM, WFM, USB* ⁴ , LSB* ⁴ , CW* ⁴	FM, WFM, AM, USB* ⁶ , LSB* ⁶ , CW* ⁶	AM, AM-TV* ² , FM, WFM, FM-TV* ³	FM, WFM, AM
	Frequency stability	±3ppm (0°C to +60°C)	±3ppm (–10°C to +60°C)	±6ppm (–10°C to +60°C)	±6ppm (–10°C to +50°C)	±6ppm (–10°C to +60°C)
	Current drain	1.2A	1.25A	150mA typ. at rated audio output with 3.7V DC* ¹	730mA typ. (color LCD ON) at TV reception with 4.5V DC	170mA typ. at rated audio output with 3.0V DC
	Battery pack or cells	—	—	BP-206, 3×AA (R6) Alkaline cells	BP-206, 3×AA (R6) Alkaline cells	2×AA (R6) Alkaline cells
	External power supply requirement	12.0V DC ±15%	12.0V DC ±15%	6.0V DC (with BC-149A/D or CP-18A/E)	3.6–6.3V DC (with BC-153A/D or CP-18A/E)	6.0V DC (with BC-149A/D or CP-18A/E)
	Antenna connector	BNC (50Ω)	BNC (50Ω)	BNC (50Ω)	BNC (50Ω)	SMA (50Ω)
	Number of memory channels	Unlimited (2600 Ch/file)	1000	1250 (including 50 scan edges and 200 auto memory write)	450 (including 50 scan edges)	1250 (including 50 scan edges and 200 auto memory write)
	Dimensions (W)×(H)×(D) projections are not included	146×41×206 mm; 5 ³ / ₄ ×1 ⁵ / ₈ ×8 ¹ / ₈ in	Main unit:146×41×206 mm; 5 ³ / ₄ ×1 ⁵ / ₈ ×8 ¹ / ₈ in Controller:111×40×26.5mm; 4 ⁷ / ₈ ×1 ¹ / ₂ ×1 ¹ / ₃₂ in	60×142×34.8 mm; 2 ³ / ₈ ×5 ¹ / ₂ ×1 ¹ / ₈ in	61×120×32.9 mm; 2 ¹ / ₃₂ ×4 ² / ₃₂ ×1 ⁹ / ₃₂ in	58×86×27mm; 2 ⁹ / ₃₂ ×3 ³ / ₈ ×1 ¹ / ₁₆ in
	Weight (approx.)	1.2kg; 2.6lb	Main unit: 1.2kg; 2.6lb Controller: 200g; 7oz	320g; 11.3oz (with antenna and battery)	300g; 10.6oz (with antenna and battery)	185g; 6.5oz (with antenna and cells)
Receiver	Sensitivity SSB, CW, RTTY, AM: at 10dB S/N FM, WFM: at 12dB SINAD	SSB, CW: 0.495–1.799MHz 5.0μV 1.8–49.999MHz 0.5μV 50–699.999MHz 0.4μV 700–1300MHz 0.5μV AM: 0.495–1.799MHz 25μV 1.8–49.999MHz 2.5μV 50–699.999MHz 2.0μV 700–1300MHz 2.5μV FM: 28–49.999MHz 0.63μV 50–699.999MHz 0.5μV 700–1300.000MHz 0.63μV 1300* ⁴ –2299.999MHz 5.6μV 2300–3000.000MHz 18μV WFM: 50–699.999MHz 1.4μV 700–1300.000MHz 1.8μV 1300* ⁴ –2299.999MHz 18μV 2300–3000.000MHz 56μV	SSB, CW: 0.495–1.799MHz 5.0μV 1.8–49.999MHz 0.5μV 50–699.999MHz 0.4μV 700–1300MHz 0.5μV AM: 0.495–1.799MHz 25μV 1.8–49.999MHz 2.5μV 50–699.999MHz 2.0μV 700–1300MHz 2.5μV FM: 28–49.999MHz 0.63μV 50–699.999MHz 0.5μV 700–1300.000MHz 0.63μV 1300* ⁴ –2299.999MHz 5.6μV 2300–3000.000MHz 18μV WFM: 50–699.999MHz 1.4μV 700–1300.000MHz 1.8μV 1300* ⁴ –2299.999MHz 18μV 2300–3000.000MHz 56μV	SSB, CW: 0.495–4.999MHz 0.4μV 5–29.999MHz 0.25μV 50–53.999MHz 0.25μV 118–146.999MHz 0.25μV 330–469.999MHz 0.32μV AM: 0.495–4.999MHz 2.2μV 5–29.999MHz 1.4μV 118–135.999MHz 1.4μV FM: 1.620–4.999MHz 0.56μV 5–221.999MHz 0.4μV 330–832.999MHz 0.56μV 833–1304.999MHz 0.71μV 1330–2304.999MHz 5.6μV 2330–2999.999MHz 18μV WFM: 76–108MHz 1.8μV 175–221.999MHz 1.8μV 470–769.999MHz 2.5μV	AM (typical): 0.495–5MHz 1.4μV 5–29.955MHz 1.0μV 118–136MHz 0.79μV 222–329.995MHz 1.0μV FM (typical): 1.625–5MHz 0.32μV 5–470MHz 0.25μV 470–800MHz 0.45μV 800–2000MHz 0.56μV 2000–2300MHz 1.0μV 2300–2450.095MHz 1.8μV WFM (typical): 76–107.995MHz 1.0μV 175–222MHz 1.0μV 470–770MHz 1.8μV	AM (typical): 0.495–4.995MHz 1.3μV 5–29.995MHz 0.71μV 118–136MHz 0.56μV 222–246.995MHz 0.56μV 247–329.995MHz 0.71μV FM (typical): 1.625–4.995MHz 0.32μV 5–117.995MHz 0.2μV 118–246.995MHz 0.18μV 247–329.995MHz 0.2μV 330–469.995MHz 0.18μV 470–999.995MHz* 0.28μV 1000–1309.995MHz 0.35μV *USA version 470–821.995MHz 0.28μV 851–866.995MHz 0.71μV 896–999.995MHz 0.28μV WFM (typical): 76–108MHz 0.89μV 175–221.995MHz 0.71μV 470–770MHz 1.0μV
	Selectivity	SSB, CW, AM: 2.8kHz/–6dB AM, FM, SSB, CW: 6.0kHz/–6dB AM, FM: 15kHz/–6dB AM, FM, WFM:50kHz/–6dB WFM: 230kHz/–6dB (typical)	SSB, CW, AM: 2.8kHz/–6dB AM, FM, SSB, CW: 6.0kHz/–6dB AM, FM: 15kHz/–6dB AM, FM, WFM: 50kHz/–6dB WFM: 230kHz/–6dB (typical)	SSB, CW: 1.8kHz/–6dB AM, FM: 12kHz/–6dB 30kHz/–60dB WFM: 150kHz/–6dB	AM, FM: 12kHz/–6dB 30kHz/–50dB WFM: 150kHz/–6dB	AM, FM: 15kHz/–9dB 30kHz/–60dB WFM: 150kHz/–6dB
	AF power at 10% distortion	500mW with an 8Ω load	500mW with an 8Ω load	100mW with an 8Ω load	100mW with an 8Ω load	100mW (typ.) with an 8Ω load
	Ext. speaker connector	2-conductor 3.5 (d) mm (1/8)/8Ω	2-conductor 3.5 (d) mm (1/8)/8Ω	2-conductor 3.5 (d) mm (1/8)/8Ω	2-conductor 3.5 (d) mm (1/8)/8Ω	2-conductor 3.5 (d) mm (1/8)/8Ω

*¹ Single receive, IC recorder OFF. *² One of either NTSC M, PAL B or PAL G systems. *³ For 900–1300 and 2250–2450MHz ranges only; not available in some versions. *⁴ 0.01–1300MHz only.

*⁵ 1300.000001MHz. *⁶ 0.150–469.999MHz only.

* The LCD display of the IC-R3 may have cosmetic imperfections that appear as small or dark spots. This is not a malfunction or defect, but a normal characteristic of LCD displays.

* The specifications of the IC-R2500 and R1500 are measured with the controller attached. Please see the IC-PCR2500 and PCR1500 specifications when used with a PC.

* The IC-PCR2500, R2500, PCR1500 and R1500 consume vehicle battery power in stand-by mode. We advise you to turn off the main unit power switch after use.

Microsoft and Windows are registered trademarks of Microsoft Corporation in the U.S.A. and other countries. Intel and Pentium are trademarks or registered trademarks of Intel Corporation or its subsidiaries in the United States and in other countries. All other trademarks are the properties of their respective holders.



Icom Inc.

1-1-32, Kamiminami, Hirano-ku, Osaka 547-0003, Japan Phone: +81 (06) 6793 5302 Fax: +81 (06) 6793 0013 URL: <http://www.icom.co.jp/world/index.html>

Count on us!

Icom America Inc.

2380 116th Avenue NE,
Bellevue, WA 98004, U.S.A.
Phone : +1 (425) 454-8155
Fax : +1 (425) 454-1509
E-mail : sales@icomamerica.com
URL : <http://www.icomamerica.com>

Icom Canada

Glenwood Centre #150-6165 Highway 17,
Delta, B.C., V4K 5B9, Canada
Phone : +1 (604) 952-4266
Fax : +1 (604) 952-0090
E-mail : info@icomcanada.com
URL : <http://www.icomcanada.com>

Icom (Australia) Pty. Ltd.

A.B.N. 88 006 092 575
Unit 1 / 103 Garden Road,
Clayton VIC 3168 Australia
Phone : +61 (03) 9549 7500
Fax : +61 (03) 9549 7505
E-mail : sales@icom.net.au
URL : <http://www.icom.net.au>

Icom New Zealand

146A Harris Road, East Tamaki,
Auckland, New Zealand
Phone : +64 (09) 274 4062
Fax : +64 (09) 274 4708
E-mail : inquiries@icom.co.nz
URL : <http://www.icom.co.nz>

Icom (Europe) GmbH

Communication Equipment
Himmelgeister Str. 100,
D-40225 Düsseldorf, Germany
Phone : +49 (0211) 346047
Fax : +49 (0211) 333639
E-mail : info@icomeurope.com
URL : <http://www.icomeurope.com>

Icom Spain S.L.

Ctra. Rubi, No. 88 "Edificio Can Castanyer"
08190, Sant Cugat del Valles, Barcelona, Spain
Phone : +34 (93) 590 26 70
Fax : +34 (93) 589 04 46
E-mail : icom@icomspain.com
URL : <http://www.icomspain.com>

Icom (UK) Ltd.

Unit 9, Sea St., Herne Bay,
Kent, CT6 8LD, U.K.
Phone : +44 (01227) 741741
Fax : +44 (01227) 741742
E-mail : info@icomuk.co.uk
URL : <http://www.icomuk.co.uk>

Icom France S.a

Zac de la Plaine, 1,
Rue Brindejone des Moulinais BP 5804,
31505 Toulouse Cedex, France
Phone : +33 (5) 61 36 03 03
Fax : +33 (5) 61 36 03 00
E-mail : icom@icom-france.com
URL : <http://www.icom-france.com>

Icom Polska

Sopot, 3 maja 54, Poland
Phone : +48 (58) 550 7135
Fax : +48 (58) 551 0484
E-mail : icompolska@icompolska.com.pl
URL : <http://www.icompolska.com.pl>

Asia Icom Inc.

6F No. 68, Sec. 1 Cheng-Teh Road,
Taipei, Taiwan, R.O.C.
Phone : +886 (02) 2559 1899
Fax : +886 (02) 2559 1874
E-mail : sales@asia-icom.com
URL : <http://www.asia-icom.com>

Beijing Icom Ltd.

10007, Long Silver Mansion, No.88, Yong Ding
Road, Haidian District, Beijing, 100099, China
Phone : +86 (010) 5889 5391/5392/5393
Fax : +86 (010) 5889 5395
E-mail : bjicom@bjicom.com
URL : <http://www.bjicom.com>

Your local distributor/dealer: